

Queen's park *Open Gardens
& Studios 2026*

Sunday 14th June 1-6pm



Sponsored by **Lampards**
ESTATE & LETTING AGENTS

*Organised by the Queen's Park Area
Residents' Association*



Agapanthus Lapis Lazuli

Front cover, Rosa 'Absolutely Fabulous'

Welcome

to Open Gardens & Studios

Thanks for supporting our local community event. We hope you have a lovely day looking at beautiful things: flowers, shrubs, art, sculpture and ceramics. There are six new gardens and studios to visit, identified here by a 'new' green/purple leaf logo. Thank you to all the gardeners and artists for opening their homes and welcoming us in.

On Hazelmere Road you can see a wonderful example of how a neglected streetscape has been transformed by the work of volunteers.


In the park, the Palace Band are at the bandstand from 2 - 3pm and Art in the Park, a pop-up exhibition, is showing examples of work from our exhibiting artists. Visit the fruit and veg allotments behind the café to find out about their new seed bank initiative and drop into the café to see the art in there.

On Salisbury Road, ICMP are hosting local artists with a pop-up exhibition and St Anne's Church will host three artists, have music performances from two local community choirs and will be selling tea and cake. A big Thank You to both venues for the generous use of their space and for their support for artists to exhibit their work.

If there is any surplus from the day, the residents' association will use it for greening our area. To read about the work of the residents' association, just turn the page.

Have a wonderful afternoon.

*Andrea, Jacqui
John & Robert*

 THE WORK OF
QUEEN'S PARK
AREA RESIDENTS'
ASSOCIATION 2/3

 THE TOUR
MAP 14/15

 MUSIC ON
THE DAY 16

 ART IN
THE PARK 17

 BAGS AND MUGS
FOR SALE 24/25

 TIPS FOR
GARDENERS 28/29

 Queens Park Open
Gardens & Studios

 @Qparkres

 qpgardens_studios

Queen's Park Area Residents' Association

Greening our neighbourhood

The residents' association's mission since 1973 has been to create a greener neighbourhood. Our Open Gardens event today will pay for the continuation of all our planting along Salisbury Road. Our local volunteers decide

what to grow and they plant and water the pots throughout the year. It's a never-ending job of litter-picking too, but the results are spectacular. Let us know if you'd like to join the Green Team!



The pots outside Queen's Park underground station



The planters by the police station

Queen's Park Day

Our residents' association also organises the joyous Queen's Park Day in September, run by our volunteers and bringing thousands of visitors to the park with free attractions and entertainment, subsidised activities and rides. Stalls are

mostly local – Scouts and Cubs, kids' clubs, crafters, vintage clothes and furniture, alongside competitions, stage shows, delicious food and more. Join in - it's free! - Sunday 15 September.

Families enjoying Queen's Park Day



The Farmers' Market

The Queen's Park Farmers' Market has been voted the best in the UK! It was officially named as best in UK at the Farm Retail Awards 2026 in Harrogate. The idea of bringing the Farmers' Market to Queen's Park came about through the initiative of two of our members, Helen Durnford and Robert Budwig. The Sunday Market started in September 2005 and has become one of the highlights of the week for many of the local residents where you can buy a whole array of fresh vegetables & fruit in season, fresh fish and meat, as well as delicious samosas, home made cakes, and delicious breads.



The cafe at the park

Supporting our Park

Our Park is at the heart of the Conservation Area and the Residents' Association works hard to protect it for future generations. We fund-raised for the renovation of the neglected sandpit which will re-open soon. For the last three years we have been urging the City of London Corporation to move ahead with our project to restore and expand the Woodland Walk, which gained strong public support in last year's survey.

Bringing our community together

Our community-run initiatives are what make Queen's Park a unique and fabulous place to be - in fact we were involved in bringing the thriving Farmers' Market to Queen's Park and started the original Book Festival (5 Sep + 6 Sept 2026)! We want our younger neighbours to get involved too and bring your energy and creativity to all the things we do. Get in touch: www.qpark.org.uk

One of many of the stalls at our Farmers' Market





1

Marianne Parsons

62 Brondesbury Road NW6 6BS
marianneparsons1@gmail.com

Open Garden

I am very happy to show how my garden has grown since last time. Unfortunately, it isn't suitable for those with mobility problems because of steps down from the balcony to the patio with pots, pond with frog fountain and octagonal greenhouse. A wooden arch with clematis, jasmine and trachelospermum leads to grass and a shaped pyrus salicifolia pendula. Two raised beds are on the left: one with blue/yellow colours and a climbing Iceberg rose, the other with shrubs and raspberries. On the right are agapanthus, crocosmia, roses, tree peony. Several sculptures are dotted about.



Hazelmere Community Garden

Open Garden (Continued)

residents, one architect, one builder, two labourers and a plentiful supply of cake. Another resident provided the chippings whilst others assisted in the levelling of the soil.

Planting: If there's one lesson we learnt, it's to seek professional advice on the planting plan and design. To this end, we asked Robert Bugwig to assist, who obliged with a garden plan that brought a conceptual unity to the planter. A Go Fund Me appeal had a fantastic response, raising £3,800 from local residents, effectively paying 50% of the costs.

Growing: The planter is the result of both inspiration and perspiration. Special mention goes to the key members of the team: Lloyd Fothergill, Andy Lowe and Mikalea Bufano.

2

Hazelmere Community Garden

Hazelmere Rd NW6 7HD

Open Garden

Background: The corner of Hazelmere and Victoria Road, known locally as the 'dumping ground', was an unloved wasteland and a depressing example of urban neglect.

The Plan: In late 2023, local residents decided to take action. We held a public meeting on site and agreed that the most viable solution would be to build a large planter to reduce opportunities for dumping etc. To this end we were successful in lobbying and obtaining a grant from Brent Council to eventually build a 16 metre timber framed planter.

Build: The frame of 46 railway sleepers was constructed over two long days by four

cont. on next page



New

3

Johanna Freudenberg

72 Victoria Road NW66QA
07802 863 300

freudenbergs@aol.com

Instagram: @johannafreudenbergart

www.johannafreudenberg.com

Open Garden & Studio

Back again to tempt you to wander down its unusual length, from Mediterranean/Antipodean planting in the sun to woodland delights in the shade, our garden of 45 years continues to celebrate the passage of time and seasonal renewal. For sale are paintings, pen and ink drawings, and painted trays.





3

Anna Jansz

72 Victoria Road NW66QA
07710 419 851

Open Studio

I started making quilts for my grandsons about 15 years ago, the first ones being cot sized and the more recent ones having grown in size to accommodate their owners. I've made dozens for family and friends, using a combination of machining and hand sewing for the piecing but always using hand stitching for the quilting itself.

In keeping with the historical traditions of quilting, it is a constant joy to source materials and colour combinations, whether from Liberty or from recycled findings out and about. This is my first venture into selling my work.



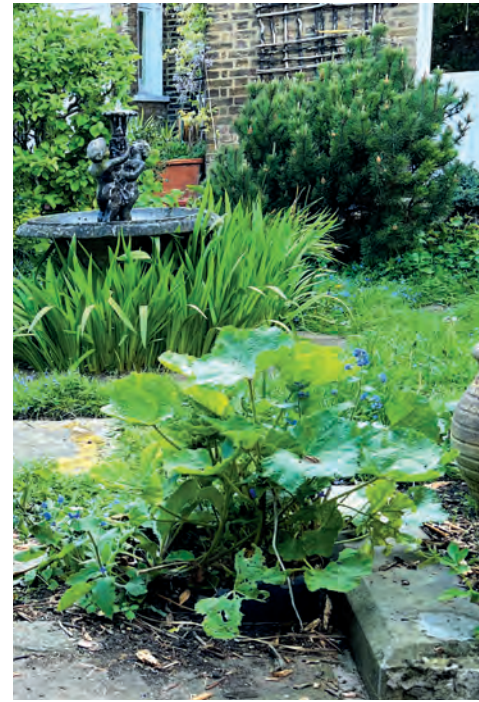
4

Theresa Edwards

18a Donaldson Road NW6 6ND
Entrance via Victoria Road, garage door
07989 835 671
theresaceramica@yahoo.co.uk
Instagram/Facebook: @theresaceramica

Open Garden & Studio

This will be my 9th participation in Queen's Park Open Gardens and Studios and another chance to welcome neighbours and friends, old and new, to my ceramic studio and courtyard garden, where I will be showing a selection of my handmade and decorated white earthenware dishes, jugs, bowls and plates. All of my designs are a combination of images and ideas inspired by the natural world, my imagination and the joy of making and decorating.



5

Martin Stopford

17 Honiton Road NW6 6QD
Entrance via Victoria Road, garden door
020 3308 6718 07747 043 142
martinstopford@hotmail.com

Open Garden & Music from 3:30 to 4:30pm

This garden first opened for Queen's Park Garden Day in June 2000. Initially it was formal, with a central fountain, mini hedges; acers, and many plants. But as the small plants grew big, its character changed! One of the delicate acers is now 15 feet high! As you step from Victoria Road, it's now an unkempt grassy oasis. It reminds me of the farm I used to have in Staffordshire, and I like it. I hope you will too.



6

John Blandy

2 Montrose Avenue NW6 6LB
07957 282 688
jb@johnblandy.co.uk
www.johnblandy.co.uk
Instagram @john2art

Open Studio

A landscape artist 'follows' individual trees through the seasons. He works in pastel on paper en plein air in all weathers. Each work is completed on the spot. The work aims to record a series of moments, building up a longitudinal portrait of the tree through the seasons and years.

This June, Blandy will be exhibiting three groups of work: Lime tree in Queen's Park series, an Apple tree painted every day since lockdown and selection of work while travelling including a series painted in and around Sydney.



7

Robert Budwig

Showing at ICMP
76-78 Salusbury Road NW6 6PA
07946 300 975
rbudwig@aol.com

Open Studio

My work is all about colour and composition and over the recent years, has become more “Naive” in style. I love painting outdoors on location, “En plain air”. There is something unique about being surrounded by the landscape, and being totally immersed in it. You become the conduit of that energy. I work mainly with Gouache paints as I love the matt quality it has when dry, but also very practical when you are traveling and painting outdoors for its quick drying quality.



7

Sara J Beazley

Showing at ICMP
76-78 Salusbury Road NW6 6PA
www.sarajbeazley.com
sara@sarajbeazley.com

Open Studio

Sara J Beazley is an artist and printmaker with over 15 years’ experience, known for combining traditional techniques with a contemporary design sensibility. Her layered works bring together drawing, photography, pattern and delicate palettes, resulting in graceful, sophisticated images exhibited and commissioned internationally across art, fashion, design and retail.



New



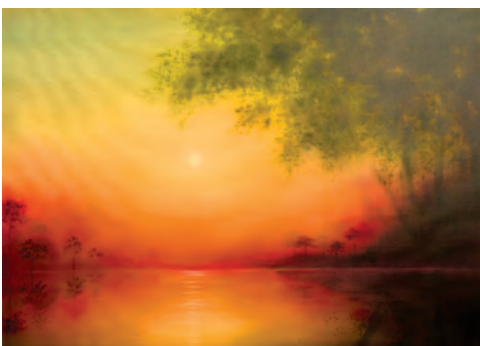
7

Simone Russell

Showing at ICMP
76-78 Salusbury Road NW6 6PA
07970 968 383
simonerussellart@gmail.com
www.simonerussellart.com

Open Studio

Simone Russell’s new collection of contemporary landscape paintings captures precious moments in nature, drawing inspiration from her leisurely walks on Hampstead Heath and travels to warmer climates. She explores the interplay of light, atmosphere and colour. Each painting features fine, luminous layers that evoke a calming experience, fostering a connection to the essence of each moment. Through her art, Simone aims to inspire a deeper appreciation for the beauty of landscapes that enrich our lives.



8

Philippa Abrahams

29 Hopefield Ave NW6 6LJ
07985 591 015
philippaabhams@gmail.com

Open Studio

I’ve been living and working in my home and studio for forty years. Nowhere is off limits as a workspace in my house. Come and see the huge variety of my work past and present. Some work is for sale including my recent children’s book.





9

Minna Daum

31 Windermere Avenue NW6 6LP
07931 587 953
minna.daum@gmail.com
Instagram: @minnadaum

Open Studio

I love painting portraits; I am happy if the sitter thinks I've captured something about them they recognise, and if the viewer feels that they have met the person portrayed and has a sense of their character and state of mind. Lately I've been working on a less representational, more imaginative series about couples in long-term relationships, related to my work as a psychotherapist. I like painting individuals and couples in their homes, and I'm happy to accept commissions.



11

St Anne's Church

125 Salusbury Road NW6 6RG
020 7624 5306
www.st-annes-brondesbury.org.uk

Open Studio

St Anne's parish was formed in 1905. The current building was erected in the 1990s, purpose built to accommodate worship, community and interfaith groups. We are a welcoming, diverse and friendly community and hope you enjoy being in the space today! You can enjoy the work of three artists, singing from two community choirs and tea and cake will be on sale. The front garden has 'Euphorbia characias wulfenii' with their large heads of lime green flowers as well as a variety of grasses including 'miscanthus'.

If you would like to join us for a service we meet every Sunday at 10am.



10

Mary Pritchard

15 Windermere Avenue NW6 6LP
07966 144 304
pritchardmary@hotmail.com
www.marypritchard.net
Instagram: @marypritchardart

Open Garden & Studio

The use of mixed media has enabled me to be more expressive with my painting. I have incorporated some of these experiments into concertina artist's books, with collage, found papers etc. I am also showing photographs, cards and handmade notebooks. My ceramics includes dishes, bowls, sculptures, tiles, bottles, and jugs. The garden continues to evolve and provides a welcoming green space. The harmonious feel of the garden is enhanced by the strict colour scheme for any flowers.



11

Ruth Kitching

Showing at St Anne's Brondesbury
125 Salusbury Road NW6 6RG
07952 835 336
hmrkitching@gmail.com

Open Studio

Recently I've been focussing on watercolour and collage, sometimes adapting and recycling old prints (never bin anything!). I've also been back to the City Lit for inspiration - as much from other student artists as from tutors.





Dahlia Park Princess

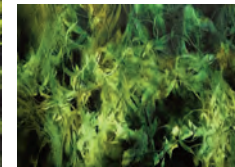
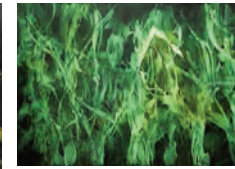
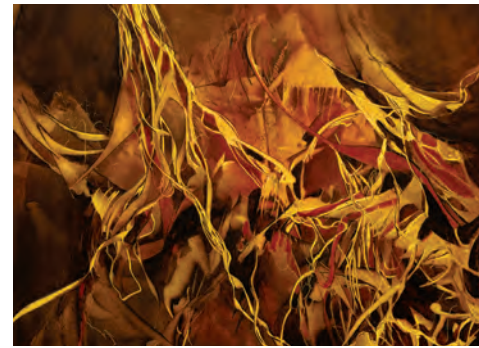
11

Jane Sullivan

Showing at St Anne's Brondesbury
125 Salusbury Road NW6 6RG
janesullivan870@hotmail.com
www.janesullivan.co.uk
Instagram: @janesullivan_art

Open Studio

The psychologist in me is interested in how we respond to and engage with landscape. My oil paintings are abstractions of the places to which I travel; I work intuitively, drawing on my own photographs, daily charcoal sketches, and a strong visual memory as I endeavour to honour the landscape's beauty, monumental scale, and fragility. The works in *Great Southern Land* draw on my 2024 return to Australia, reflecting time spent visiting the national parks of the Northern Territory and the southeastern coast of Queensland.



11

Jessica Holmes

Showing at St Anne's Brondesbury
125 Salusbury Road NW6 6RG
jessicaholmes@gmail.com
www.jessicaholmes.co.uk

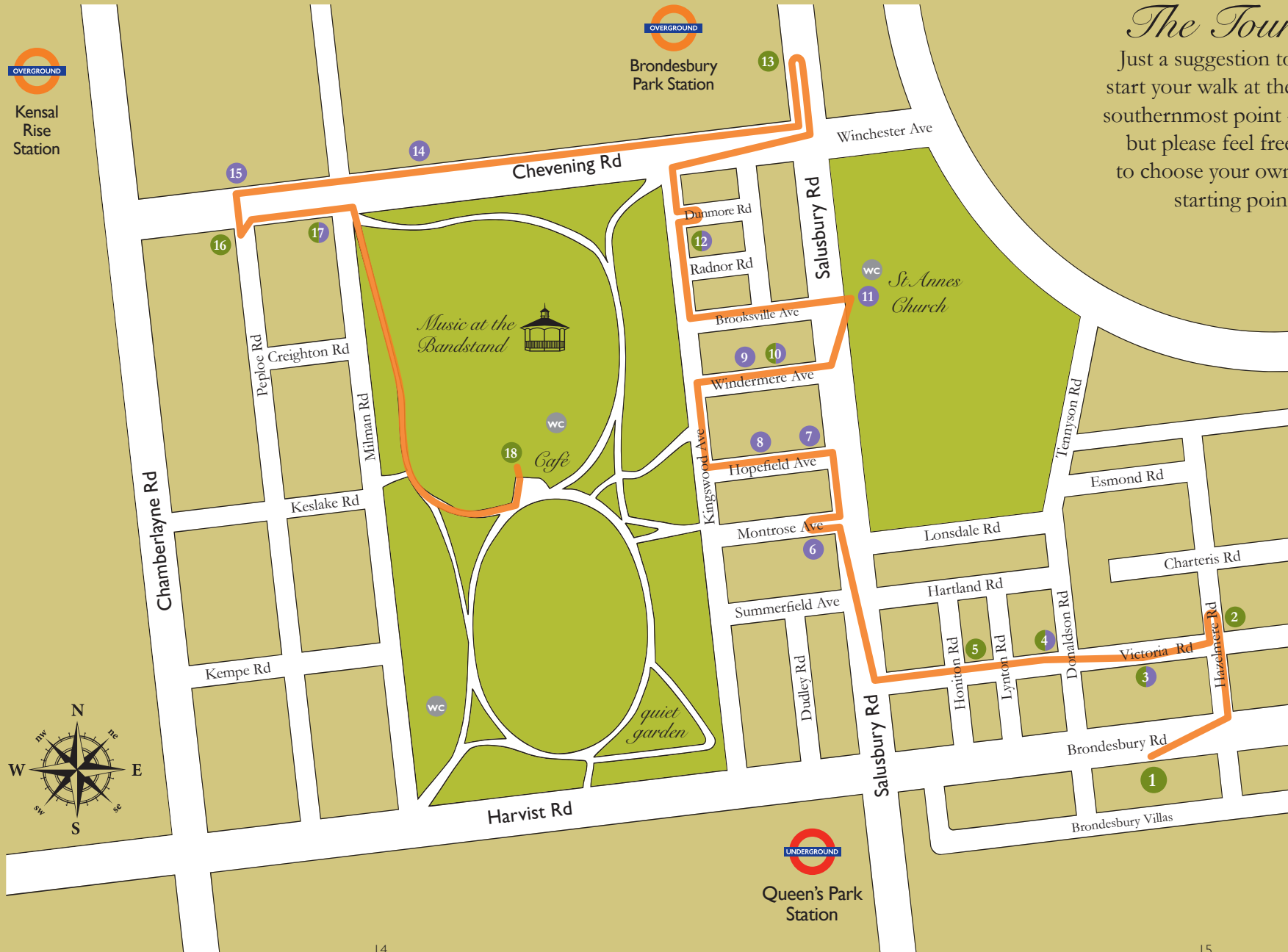
Open Studio

My work is set at a point in space where past and present can be experienced simultaneously, deepening and reifying the sense of a place. This is often a dilapidated building or garden, or one that has disappeared completely, and has to be rediscovered using archival collections and historical remnants. My practice is a merging of archival materials and historical sites, using elements of these to focus on artefacts and places, questioning memory and interpretation.



Open Gardens & Studios 2026

Gardeners & Artists



The Tour

Just a suggestion to start your walk at the southernmost point - but please feel free to choose your own starting point

- 1 Marianne Parsons
- 2 Hazelmere New Community Garden
- 3 Johanna Freudenberg
- 3 Anna Jansz New
- 4 Theresa Edwards
- 5 Martin Stopford
- 6 John Blandy
- 7 Robert Budwig
- 7 Simone Russell
- 7 Sara J Beazley New
- 8 Philippa Abrahams
- 9 Minna Daum
- 10 Mary Pritchard
- 11 St Anne's Church
- 11 Ruth Kitching
- 11 Jane Sullivan
- 11 Jessica Holmes New
- 12 Eliana & Ray Tomkins
- 13 Energy Garden at Brondesbury Park Station
- 14 Rob Carter
- 15 Ailon Freedman
- 15 Amura Peters New
- 16 Amanda Rubin-Lewis New
- 17 Jacqui Roche
- 18 Fruit & Veg Allotment and Art at the Café



Music on the Day

In the Park
Music on the Bandstand

2 - 3pm
The Palace Band

*T*hey take their name from Alexandra Palace, close to where they rehearse. The band plays a wide variety of pieces including Bach, Handel, Mozart.

At St Anne's Church
125 Salisbury Road NW6 6RG

2:30 - 2:45pm
Acapella Rising

*R*ensal-based community choir giving the acapella treatment to a range of great music.

2:45 - 3:20pm
MJ's Choirs

*A*non-auditioning, all-embracing choir singing Mozart to Abba, gospel to swing, musicals and new contemporary work.



Art in the Park

*T*his year we are happy to have Art in the Park as a new addition to this event. Open Gardens & Studios revolves around Queen's Park, the hub of our community. It is a pleasure to show here some of the art from local artists in and around our area.

We are enormously grateful to The City of London Corporation for access to the park. We would also like to thank M P Moran & Sons for supplying the exhibition structure and John Finch for putting it all together.



Music on the Day

In the Park
Music on the Bandstand

2 - 3pm
The Palace Band

*T*hey take their name from Alexandra Palace, close to where they rehearse. The band plays a wide variety of pieces including Bach, Handel, Mozart.

At St Anne's Church
125 Salisbury Road NW6 6RG

2:30 - 2:45pm
Acapella Rising

*R*ensal-based community choir giving the acapella treatment to a range of great music.

2:45 - 3:20pm
MJ's Choirs

*A*non-auditioning, all-embracing choir singing Mozart to Abba, gospel to swing, musicals and new contemporary work.



Art in the Park

*T*his year we are happy to have Art in the Park as a new addition to this event. Open Gardens & Studios revolves around Queen's Park, the hub of our community. It is a pleasure to show here some of the art from local artists in and around our area.

We are enormously grateful to The City of London Corporation for access to the park. We would also like to thank M P Moran & Sons for supplying the exhibition structure and John Finch for putting it all together.





12

Eliana & Ray Tomkins

44 Kingswood Avenue NW6 6LS
Garden entrance via Dunmore Road
Instagram: @eltoglass

Open Garden & Studio

The garden is on three levels, sloping down from the house. Facing NE allows shade-loving plants to thrive, but there's enough sun to satisfy a number of fruiting shrubs and trees.

Fused and stained glass pieces will be available to buy.



13

Energy Garden at Brondesbury Park Station

213A Chevening Road NW6 6RP
Inside the station on platforms 1&2
info@energygarden.org.uk
www.energygarden.org.uk

Open Garden

The Brondesbury Park Energy Garden is a community project located on Network Rail's leased space. Residents maintain the garden with Energy Garden's support, featuring areas for growing edibles, flowers, and fruit trees. The project includes permaculture initiatives like composting and solar energy use to combat climate change. With 18 gardens across London, the project invites volunteers for gardening sessions and encourages community involvement in sustainable practices.



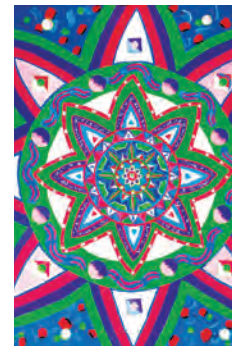
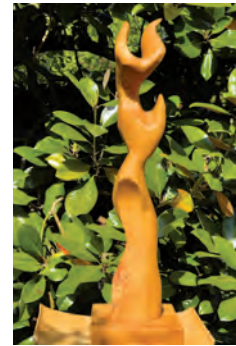
14

Rob Carter

115 Chevening Road NW6 6DU
07870 632 122
rob@poshrob.com
www.poshrob.com
Instagram: @poshrobcom

Open Studio

Rob designs and makes contemporary furniture and sculpture from sustainable hardwoods. Wherever possible, materials are sourced locally and include English oak, lime and 5000 year old bog oak. From his workshop, he uses traditional methods and tools, wood carving gouges and chisels. Natural figure and marks in the grain are emphasised. Furniture is individually made and varies from chairs to tables and cabinets. Sculptures include figurative work, politically motivated hand gestures and sculptured table lamps, large and small.



15

Ailon Freedman

Flat 3, 71 Chevening Road NW6 6DA
ailonfreedman1@gmail.com
linktree/AilonFree

Open Studio

Ailon Freedman is a yoga teacher and artist who has exhibited in London, New York, Mexico and India.

His work is rooted in the healing power of colour fused with eastern mysticism and mandalas. Alongside art and yoga, he runs clowning and creativity workshops for the School of Playfulness. All of his works are available as prints on canvas.





15

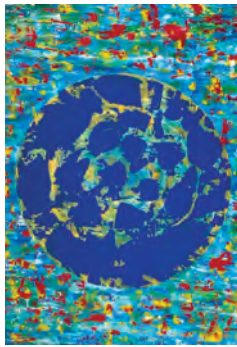
Amura Peters

Flat 3, 71 Chevening Road NW6 6DA
amurapeters@gmail.com

Open Studio

Amura's art is inspired by the beauty of nature and the invigorating power of colour.

Her works often portray the vibrant energy of the sun and the stillness of the moon. She loves the creative process of art making - getting lost in the journey and letting the colours and forms emerge by themselves. As well as her acrylic paintings, Amura also enjoys working with collage and mosaics.



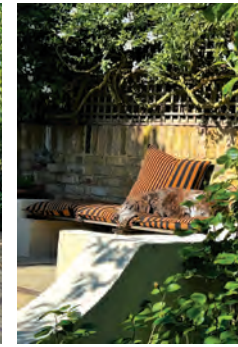
16

Amanda Rubin-Lewis

74 Chevening Road NW6 6DE
Entrance to the garden via the black double doors on Peploe Road

Open Garden

We were fortunate to have a friend design our garden, who went on to win Best in Show at Chelsea in 2023. Over the years, some of the planting has changed but I've tried to maintain much of the spirit of his original designs.



17

Jacqui Roche

104 Chevening Road NW6 6DY
Entrance to studio through the side door
07970 755 558

jacquirche@icloud.com
www.jacquirche.com

Instagram: @jacquircheceramics

Open Garden & Studio

Our garden is a mixture of sun and shade, south-facing with a large horse chestnut tree at the end. A short garden, framed with an apple tree and a Cornus tree, and borders dotted with irises, astilbe, thalictrum, hydrangeas, geraniums and roses. Studying Art and Design BAHons, majoring in ceramics at Brighton, I have worked with a variety of clays over the years but enjoy modelling flowers in porcelain, using its beautiful and delicate qualities to create realistic sculptural work.



18

Fruit & Veg Allotment and Art at the Café

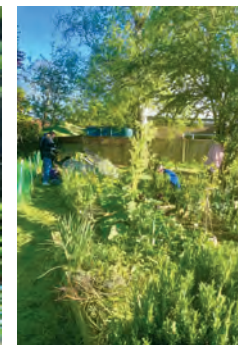
Behind the Queens Park Café
Transition Town Kensal to Kilburn
<https://ttkensaltokilburn.ning.com>

Open Garden

Supported by Kensal to Kilburn Transition, our urban gardening community project currently holds 24 individual mini plots, 3 communal spaces, and circa 30 members.

Learn growing techniques from experienced members and explore our exciting new seed bank initiative. Bring seedlings to exchange. Current liaison Blanca Regina presents a special installation celebrating the flowers and plants thriving in our allotments.

Perfect for gardeners of all levels, come connect with our community!





The Park

Opened by the Lord Mayor of London in November 1887, Queen's Park, enjoyed by thousands of visitors, offers a range of activities. Managed by the City of London, it is maintained to a high standard to offer opportunities for leisure, recreation and relaxation while also encouraging biodiversity and enjoyment of visitors.

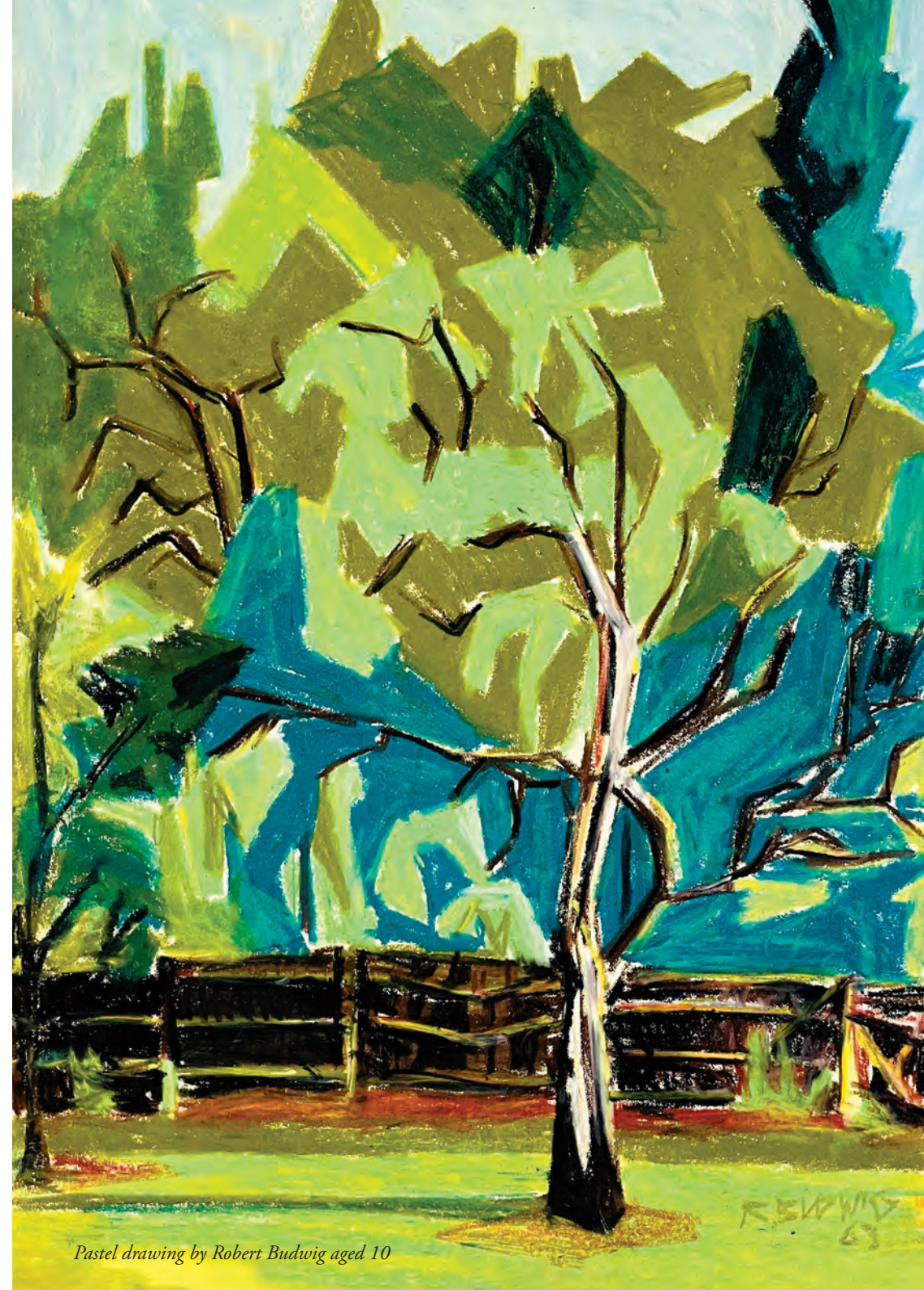
New planting

As the seasons change, the gardens in Queen's Park continue to be carefully tended and refreshed, offering visitors a rich mix of colour, texture and seasonal interest.

Over the winter months, the final section of shrubbery pruning along the western edge of the Quiet Garden was completed. This work has helped to gently open up the planting, allowing more light to reach the ground. The area was then mulched with ornamental bark, helping to retain moisture and improve soil health. Alongside the established swathes of bluebells, these improvements have already begun to show results, with wild garlic bulbs spreading naturally through the shrubbery to create a lush spring display.

Further enhancement work has taken place at the lower end of the Quiet Garden, which forms part of the park's conservation area. Carefully chosen bulbs – including anemones, snowdrops and fritillaria – have been planted to extend the seasonal interest and support biodiversity.

Elsewhere, the park's formal spring bedding has provided a striking welcome, featuring rich reddish pink hyacinths paired with elegant white flowered daffodil bulbs. In mid-June the formal summer bedding display, consisting of scarlet geraniums and purple verbenas, will be planted up. The hanging baskets, this summer, will contain a mix of burgundy, dark blue, light blue and white trailing petunias.



Pastel drawing by Robert Budwig aged 10



Queen's Park Bags & Mugs

As part of our fund raising, we commissioned Robert Budwig, who was a textile and graphic designer, to create these jute bags lined with a protective film, and fine china mugs to promote our Residents' Association.

To purchase any of these items, please email the Membership Secretary at:
qpmembership@gmail.com

We offer free delivery to your address.



Queen's Park Mugs

£10 each
Ref: 1903



Queen's Park 50th Anniversary Mugs

£10 each
Ref: 1904



Queen's Park

Jute Bags

£5 each
Ref: 1905

Sponsors

Lampards

Estate and Letting Agents
With over 60 years of combined experience in
North West London, we know every street, every
trend and every detail that matters
4a Lonsdale Road, Queens park NW6 6RD
Tel 020 8208 0055
www.lampards.co.uk

New York Pilates

Classical Pilates Sessions/Classes on Reformers/
Towers/Mat from beginners to advanced
Unit 2, The Linen House,
253 Kilburn Lane W10 4BQ
Tel 07718 785 870
www.nypilates.co.uk

Worldly Wicked & Wise Gallery & Frame Shop

Art exhibition gallery space, bespoke
and contract picture framing
81 Salusbury Road NW6 6NH
Tel 020 7372 1110
www.worldlywickedandwise.co.uk

Sponsors

Scarlet & Violet

Beautiful country garden flowers in loose,
soft, natural arrangements
76 Chamberlayne Road NW10 3JJ
Tel 020 8969 9446
www.scarletandviolet.co.uk

Osbornes Law

Award winning firm advising on family issues, personal injury
claims, property & housing, wills, trusts & estates
Livery House, 9 Pratt Street, Camden Town NW1 0AE
Tel 020 7485 8811
www.osborneslaw.com

With thanks to all the gardeners, artists, musicians who
made this project possible. To Paul Brown and the
park team for all their wonderful work

Queen's Park Open Gardens & Studios is organised by
John Blandy, Robert Budwig, Jacqui Roche & Andrea Szalanczi

Special thanks for the photography to Mary Pritchard and Geza Singer

Brochure designed by Robert Budwig
Artwork by Robert Riley of Design Odyssey www.designodyssey.art
Printed by Glyn Rees of QP Printing 07593 025 013

Tips for growing Cherry Tomatoes

I often receive requests regarding how best to grow Cherry tomatoes, so here are a few tips to assist you in successfully planting this fruit.

Tomatoes are relatively easy to grow, but require rich, well-drained soil exposed to at least 6 hours of direct sun per day. The art of growing tomatoes is a skill learned over time, but any beginner can succeed with tomatoes by learning the basics.

History: Tomatoes originated in the Andes region of South America (modern-day Peru, Ecuador, Chile) as small, wild berries before being domesticated in Central America and Mexico by the Aztecs and Mayans around 500 BCE – 700 AD.

Choosing the right variety: Cherry tomatoes are often sweeter than larger varieties which is why we have suggested you start off with cherry tomatoes. You can buy seedlings (small plants) that are appx 15-20cm tall from a local farmers market or plant nursery.

Keep them inside during the nights, and outside in a sunny spot during the day to harden them off slowly until the night temperatures stay at above 10C, around early June.

Sungold is best for flavour and incredibly sweet. Gardeners Delight is a reliable, larger cherry type and excellent for growing outdoors. Apero has a great taste and high sugar content.

Planting tips: Wait for warmth - do not plant outdoor tomatoes till June or when the nights are warmer as they hate temperature shocks.

When moving seedlings to their final large pot (c. 30-35cm wide), use a high-quality peat-free multi-purpose compost.

Bury the stem up to the first set of leaves. This encourages extra roots to grow from the stem, creating a stronger plant. Each plant will grow from this small size into a plant appx 1m tall.

Support: Ensure the pot is sturdy enough and that the plant is supported with bamboo canes and twine as it grows, as they can become heavy with fruit.

Essential Maintenance: Consistent



watering at the base of the plant, not the leaves, will prevent disease.

Keeping the soil evenly moist prevents the fruit from 'splitting' or developing 'blossom end rot'. It's best to water in the morning, and at least twice a week, depending on the weather conditions.

Feeding: Once the first tiny green fruits appear, begin a weekly feed with a high potash liquid tomato fertiliser or liquid seaweed, which is also incredibly good for other plants in the garden.

Improving Ripening: Strip lower leaves: As the fruit develops, remove any lower leaves to improve ventilation and let more sun reach the tomatoes. Pick out side shoots that emerge from the centre stem, otherwise their growth will take energy from the main branches.

Harvest every couple of days: Cherry tomatoes are prolific and their fruit

ripens constantly for weeks. Check plants every other day to harvest the ripe fruit. They are ripe when fully coloured but remain slightly firm to the touch. Harvest fruit regularly to spur plants to continue producing and keep pests at bay.

If you are going on vacation, invite your neighbours to come and harvest in return for watering.

Important: Once the plant has formed four fruit trusses, you must remove the growing point.

Maturing the last tomatoes indoors: If the weather turns cold before all the fruit is ripe, pick the green fruit and put them in a drawer or bag with a ripe banana or apple or ripe tomatoes. The ethylene gas they release will speed up ripening.

Enjoy your gardening!!

Robert Budwig



Small seedling plants



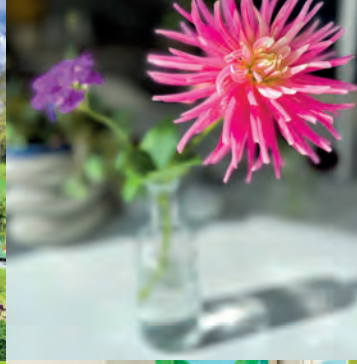
Support with canes



Gardeners Delight



Sungold



Many thanks for supporting our biennial event and we very much hope you enjoy your day. Please come and share other events organised by the Queen's Park Area Residents' Association.

You can find us at:
www.qpark.org.uk

Sponsored by
Lampards
ESTATE & LETTING AGENTS

